

“Where the Rain and Sunshine Meet”

To The Point

2011:3

LYLE, WASHINGTON

July—September 2011

Lyle’s Blog: www.lyle-wa.blogspot.com

Lyle’s Website: www.community.gorge.net/lyle/

Low Cost Mini-Health Fair in Lyle this Saturday—Compliments of Skyline

Stephanie Irving

Lyle residents can receive low-cost health screenings on Saturday, July 2nd from 6:30am to 9am just before diving into the Lion’s famed monthly breakfasts at Lyle Lions.

Skyline Hospital’s lab technicians will come to Lyle to offer an easy, economical way to assess your general health through a low-cost blood draw and/or PSA test. If you intend to have your blood drawn, you must fast for at least 12-hours prior. So arrive hungry, get your blood drawn, and then enjoy breakfast.

Here’s your opportunity to get a blood chemistry screen and/or a PSA test at a steeply discounted rate (and close to home). The \$40 blood test (normally \$275) includes a lipid panel (cholesterol, triglycerides, HDL, and coronary risk), a comprehensive metabolic panel, and a thyroid check (TSH). Men may opt for the prostate specific antigen (PSA) test for an additional \$20 (normally \$134). Payments must be made by cash or check.

In addition, Skyline will provide free diabetes risk analysis and/or an A1C test. You can pick up a colorectal cancer screening kit available for home testing. And \$150 coupons for mammograms will be available to those who do not have insurance.

This mini-health fair is designed to enhance your regular health care needs by providing early detection or prevention at little cost. Skyline Hospital sends a copy of the results of these screenings to the participants and to the participant’s family physician. More mini-clinics coming to other Klickitat community’s throughout the summer and, of course, to the entire community in October. For more information call Skyline at 509.493.1101.

Farmers’ Market in Lyle

Sheri Starkin

Lyle’s Farmers’ Market will kick off the season on Saturday, July 2nd from 3 to 5 p.m.

at Lyle Activity Center’s Park between 3rd and 4th Streets on Hwy14.

The Gorge Grown Mobile Farmers’ Market trunk will arrive every Saturday afternoon from July



through September carrying fresh produce. Local food and local handmade quilts, gorge photography and other locally made items will also be featured.

If you’d like to be a vendor, or host a kid’s activity, or have a band that would like to play at market, WE WANT YOU! Please contact me, Sherri Starkin at 360.608.5916 for more information.

If you have excess garden produce, there will be a community table accepting donations. There will be no wasted food! All unsold produce will be donated and used at the local Food Bank or at Lyle’s senior lunch. (*Continues on page 4*)

What’s Inside??

Burn Ban, Need New Recruits	3
Community Dance/Benefit, Holiday Bazaar	3
River Peoples Cultural Exchange	4
Lyle Celebration Ctr—2 Classes	5
Improvements at Twin Bridges Museum	5
Sugar Woes, LAC Room Rental, Boo	6
Mr. Oldenburg Retires, Tai Chi	6
Medical Clinic in Lyle? Dallesport Music Jam	7



What's Up in Town??

Community Breakfast: 1st Saturday of the month, 7-10:30 a.m. at the Lion's Club, 5th & State Streets.

Lion's Club: Meeting & potluck on the 1st and 3rd Mondays of the month, 5th & State Streets.

Lyle Celebration Center: Services at 10:30 a.m. & 6:00 p.m. on Sundays; Sunday School at 9:30 a.m. 715 Washington Street.

Lyle Community Council: 4th Monday at 7 p.m. at the Lion's Club, 5th & State Streets.

Lyle Fire Department: 514 Washington St., Business meeting is open to the public on the 4th Thursday at 7 p.m. Drills on the 1st, 3rd, and 4th Thursdays at 7 p.m.

Lyle Grange: Meeting & potluck on 2nd Saturday at 12:30 p.m.; Grange Hall Rd. off Old Hwy 8.

School Board Meetings: Next to the last Thursday of the month at 7 p.m. at the High School; 625 Keasey Ave.,

Senior Meals: Tuesdays at noon at the Lion's Club, 5th & State Streets

United Methodist Church: 403 Klickitat Ave, Service at 10:00 a.m., Seekers (Bible Study) at 9:00 a.m., Lunch after service at Lyle Hotel.

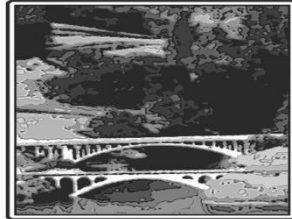


Additional information about upcoming events
can be found at
<http://www.lyle-wa.blogspot.com/>

To The Point

PO Box 952, Lyle WA 98635

Serving Lyle and her neighboring communities.
Sponsored by the Lyle Community Council;
published quarterly—compliments of Klickitat
County Economic Development Council.



LYLE
WASHINGTON

www.community.gorge.net/lyle

Lyle's Community Council Members

Darla Brashers.....	365-4432
Barbara Sexton.....	365-5374
Joy Collins.....	365-5102
Terry Mills.....	365-3903
Juliet Pouillon.....	365-2795
Mildred Lykens.....	365-0060
Oren Johnson.....	(541)490-5663

The Next Issue...

...of *To The Point* is scheduled to be delivered on or about October 1st. If you have information, a story or an idea you'd like to see included, you may contact any one of Lyle Community Council members (their names and contact information is located directly above this article) or Glenda Lovejoy at 365-6831, or lovejoy@gorge.net. Deadline for submission will be September 20th; but there' earlier is just fine too!

County Burn Ban

Glenda Lovejoy

The Klickitat County Burn Ban is in effect as of July 1, 2011. This means no outdoor burning is allowed. Extreme caution is recommended with barbeques and camp stoves; don't leave them unattended. It's a wise idea to have a fire extinguisher or a charged hose line readily available. Be aware that people can be held accountable for fires they cause.

Concerns about illegal burning can be reported to the Klickitat County Sheriff's Office. If you have any questions, please contact Fire Chief Scott Brewer at chief@lylefire.com or the department phone at 509-365-2500.

Notes from Chief Brewer

As you all know, we've had a very cool and wet spring. However, as warm and windy days become more consistent, the fuels begin to dry dramatically. The grass is particularly high this year due to the favorable growth conditions this spring so we could still be in for a challenging wildland fire season.

In addition, we're looking for new recruits. If you've always wanted to be part of a group that works hard, has a good time, gets to help people in

their own community and has fun getting really dirty, this just might be for you. No experience is necessary, only a willingness to learn...it's a fun and exciting way to give back to your community.



You must be at least 16 years of age, complete a written application and have a record free of criminal charges. In addition, you will be required to attend 50% of scheduled training as well as special weekend training events.

If you are interested, please contact Chief Brewer at chief@lylefire.com for information or to request an application.

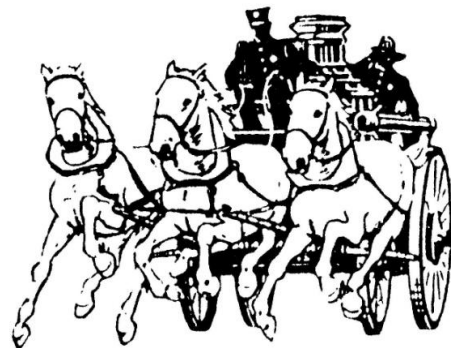
SAVE THE DATE! Dance! Celebrate! Support!

Juliet Pouillon

This summer, your Lyle Community Council is sponsoring a community-wide party called "The Last Blast of Summer." This event is a fundraiser for our Lyle Volunteer Fire Dept. The hope is to raise enough money to purchase equipment that would make responses easier and safer, such as a lighter stokes basket and a litter wheel. "This would allow us to hike to reach patients with our gear easier and safer than in the past, so we can start providing care sooner," said Scott Brewer, Lyle Fire Chief.

The Last Blast of Summer is a family-friendly event with live music, dancing, great food, and a silent auction. Please join us for a great time and to show your appreciation for the hard-working men and women of the Lyle Volunteer Fire Department!

- Friday, August 12th 6pm-10pm
- The Columbia Grange, Old Highway 8, Lyle, WA
- \$5 per person or \$15 per family.



Planning Ahead.....

Sandy Doolin

Yes, summer has recently arrived, but it's never too early to plan for the next Holiday Bazaar. It always happens on the second weekend of November (Fri through Sun) at the Lyle Activity Center. If you are interested in participating, please contact Laurece Bonham at (509)365-2011. The organizers may be able to provide you with a table for set up; please inquire.

3rd Annual River Peoples Cultural Exchange Brings Many Surprises

Portia Masterson

May 14th's event brought some delightful surprises. Eager to enjoy our Native dancers and drummers early in the event, the program instead paused for the ceremonial posting of the colors by the Yakama Warriors. Chief Johnny Jackson and Jake Mann honored the memory of Jake's brother David Mann, who passed on this year.

Our guest speakers, Denny Hurtado, Lyn Dennis, Rick Griffin, and Andy Fisher brought rich content and greater understanding to the day's activities. To our surprise and delight, Rick called young people forward for high energy activities and lessons for life. This was a splendid tribute to our honored youth this year.

As always the fry bread sales were brisk as was business for the other sales. Participants enjoyed buying smoked salmon to take home, handwork by the Native People's Circle of Hope, images of Native performers from past Cultural Exchanges, and books on local Native history sponsored by Klindt's Bookstore.

Although finding adequate funding was a challenge this year, donations from businesses and local citizens demonstrated their commitment and enjoyment of the Cultural Exchange, Lyle's largest annual community event.

Many unseen surprises delighted the organizing committee. Two hundred visitors signed in at the Twin Bridges Museum. Native families, who prepared the salmon, shared traditional dances, music, and stories appreciated the supplemental income during this poor fishing season. The Native craft activities centers lead by Quincy and Suzanne McConville were so popular that



Photo by John Longfellow

some people took craft kits home with them as there was not time or space for complete them on Saturday. Alexis Anquiano from Warm Springs lent his talent and passion to the video recording of the day's events. When it was time to serve the salmon feast, Victoria Jim's young dancers put on the servers' gloves and stood behind the buffet tables ready to serve the food.

All week, the weather forecast had been for rain on event day. Unfortunately, that kept some people away but when the rain arrived about 4:30, everyone swung into action in a fantastic demonstration of community

support. The heavy tables and chairs, trash cans, the food service supplies and the PA system were quickly moved into the Lyle Activity Center before the deluge struck. People packed into the corridor and old class rooms and socialized while kids gleefully ran around outside in the rain and the arrangement for serving was set up. The day wound down with a delicious feast.

With so many unexpected turns of events having pleasant outcomes, the hard working organizing committee and many event volunteers had a remarkable revelation: the true spirit of a community event involves participants who help guide the spontaneously evolving program. It is not about organizers performing for a passive audience but everyone making a contribution as the opportunities arise. Thank you to all who came and made the day a memorable event with the blossoming of new friendships and understandings. Join us again next year!



Photo by John Longfellow

Thanks for Your Support & 2 New Classes to Offer

Les and Wanda Haarstad

Lyle Celebration Center's Vacation Bible School for 2011 is over for this year; we'd like to thank all the local businesses who gave and helped make it such a great success: Open Ocean, White Salmon Thriftway, Lyle Country Cafe, and the Lyle Merc. Thank you for your generosity!

We also want to announce two classes that will be starting in the fall. Dr. Emerson Eggerichs' class on marriage, titled "Love and Respect," will begin Tuesday, September 6th, from 7:00 - 8:00 pm at Lyle Celebration Center. (715 Washington Street in Lyle) This class will run for 13 weeks. Since you want your marriage to be the best it can be, come join us for these classes. They will help you implement the principles of building a loving and lasting relationship. There is a workbook available at a minimal cost for each participant/couple.

The second class will begin Saturday, September 3rd at 7:00 pm. We will be going through Dave Ramsey's Financial Peace University. This is a 13 week class also. Dave Ramsay will present information which will help put your finances in order and keep them working for you. Cost of the material is \$93.00 per individual/couple. He can be heard on KACI 1300 from 6:00 to 8:00 weekdays. Don't miss this opportunity. Come the first night free to check it out and we hope you'll decide to finish the series with us.

What's New at Twin Bridges Museum?

Barbara Sexton

Plan to visit Twin Bridges Museum (308 Second Street in Lyle) sometime this summer and enjoy the new layout and the new displays. The Museum will be open on Saturdays from 3 to 5 p.m., July through September, at the same time the Farmers Market is being held in the park. It may be open other hours also, so watch for their sign at the corner of Second Street and Hwy 14

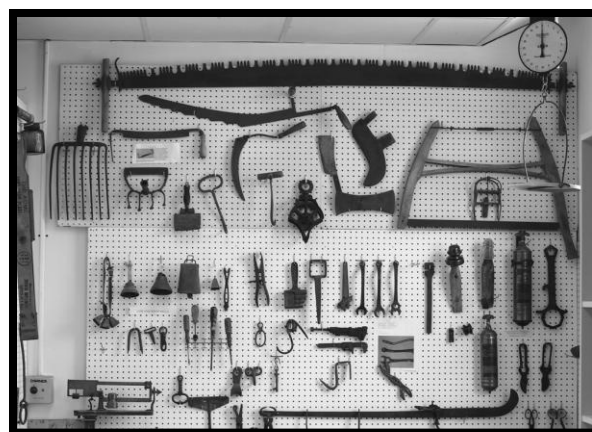
Over two hundred visitors signed in on the day of the Cultural Exchange. They enjoyed the Native American display, the old-time kitchen, and the revamped tool area. (If you know the name of any of the un-named items in the museum, please share!)



Exciting news—the Museum was awarded a \$3,000 historical preservation grant from the county! Plans



are to use the funds to restore a sign that hung at the Riverside Hotel, which was located on the point when the town of Lyle was there, pre-1911. There



All 3 photos by John Longfellow

are also plans to incorporate some of the Activity Center's hallway into a display area and to host a quilt show later in the year.

Remember admission is free, but your donations, both of items and funds, will help to sustain the work done by volunteers to preserve the history of our community

Sugar—High Fructose or Cane

It's All The Same and All TOO Much

Vern Harpole

Did you know that in 1900, the average person in the US consumed 1 pound of refined sugar a year, and this year it is over 100 pounds per year? Yeah...OMG!

The nonsense of high fructose sweeteners not being as good as cane sugar is marketing hype. They both contain about 50% fructose. It's not that fructose is bad; it's we consume it in quantities that completely overwhelm our body's ability to process it. *A 20 oz bottle of soda has about 25 apples worth of fructose in it...*again, OMG!!!

Klickitat County, like the country, is affected by the obesity epidemic that is physically and financially killing us. The country is going broke mostly because we can't afford increasing health costs...and the main driver of increasing health costs is the care required to cover diseases related to obesity. Please, cut down on refined sugar...save yourself and the country!



Lyle Activity Center Room Rental Rates

- \$5....Children's Programming (approx 3 hrs)
- \$25.....4 Hour Meeting or Class
- \$40.....Full Day
- \$80.....2 Days

Free Wi-Fi available!

To rent a room, please call Joy Collins at 365-5102, or Barbara Sexton at 365-5374. You'll need to fill out a rental agreement. All fees are negotiable, based on need.

We are a community activity center. We'd love to hear your ideas about how to make the building most usable for the community. Contact lisaconway@gorge.net with ideas or questions.



Boo! (Who Said That?)

Glenda Lovejoy

OLESS (Old Lyle Elementary School Supporters) is planning a Halloween themed fundraiser for the Lyle Activity Center that may include a Haunted House. We're looking for volunteers to help plan and set up the event. If someone is willing to take on the role of committee chair for this event, that would be fabulous. The OLESS Board can't do this without community support. Are you interested?? Call Lisa Conway at 509.365.6828. Come on, it'll be fun!!!



Dean Oldenburg Retires

Julie Navarro

Many have already heard the news, but just in case.... After 41 years of teaching, Mr. Dean Oldenburg announced that he would be retiring from Lyle School District. His official titles while at Dallesport Elementary School included teacher, principal, coach and Title I Director. To many of his co-workers, he was mentor and friend.

Mr. Oldenburg, thank you for your commitment and dedication to the children of the Lyle School District. Happy Retirement!

Tai Chi Classes in Lyle

Vern Harpole

Janet Essley will be teaching Tai Chi Classes at the Lyle Activity Center from 7-8 PM Tue and Thurs evenings, starting on July 5th. There will be a total of 6 classes and she will teach the first 12 moves of the basic 24 move exercise. All levels of fitness and expertise are welcome. Classes will cost \$50 for the 6 sessions, a real bargain since these classes are usually \$15-20 an hour in Portland. Contact Vern Harpole at 509.480.2607 or just show up for the first class.





A Medical Clinic in Lyle?!

Vern Harpole, MD

Skyline Hospital's CEO, Mike Madden, along with several other Skyline employees, were at the Lion's Club on Thursday, June 16th,

to discuss the upcoming re-vote on the hospital levy. (The levy will be on the August ballot again.)

We learned that the hospital and the Mid Columbia Family Health group in White Salmon understand they need to do better outreach to the small communities in the hospital district. They are planning health fairs in these communities, and are also discussing holding once or twice a month clinics as well. These clinics will probably be for routine follow-ups and care for chronic conditions to save folks from driving to White Salmon.

The reason for the outreach, of course, is they need our vote to pass the levy. Who knew Lyle, Dallesport and Glenwood had political clout?! A few facts that we learned about the levy and the hospital:

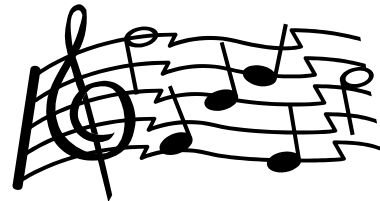
1. The levy is needed to purchase software for electronic medical records (EMR). This is a federal requirement that must be implemented in order to keep Medicare funding.
2. The Feds will match our levy funds.
3. Without EMRs and Medicare funding, the hospital will not likely stay in business.
4. Without the hospital, we lose the excellent local ambulance service for our small towns.
5. Without the hospital, we lose a valuable resource for basic health care, OB/GYN services, trauma and orthopedic surgeries as well as numerous local jobs.
6. Without the hospital, we lose over a million dollars in monthly payroll in our county, and all our medical dollars will go across the river to hospitals that have no political reason to support Klickitat County.

I believe there are very compelling business and local control reasons to support the levy, but every one of the readers of *To the Point* has their own personal experience with Skyline, their own opinion and unique financial situation; you must vote what is right for you.

Dallesport Music Jam

Stephanie Irving

Skyline Hospital levy committee members will be supplying the pie for the next Dallesport Music Jam at the Dallesport Community Center on Sunday, July 17th from 2 to 5pm. Representatives from Skyline will be there to answer any questions Dallesport residents may have about the hospital and the upcoming levy.



Farmers' Market

(Continued from page 1)

In addition, a special program will be featured each week. On July 2nd, Lyle Fire Department will host an activity for the kids, providing an opportunity for some hands-on with fire hoses and putting out simulated house fires.

On July 9th, Master Food Preservers will have a booth to answer food preservation questions, provide helpful handouts and offer testing of pressure cookers. Bring your lid to be tested for FREE!!

The new grill at the Picnic Pavilion is now available for use, first come-first serve (briquettes only), so come buy some fresh produce and have a family picnic. It's a great spot!

All Farmers' Market events will be free throughout summer—please join us!

Lyle Community Council
P.O. Box 952
Lyle, WA 98635

Presorted Standard
U.S. Postage Paid
Goldendale, WA
Permit # 7

Postal Patron



*Sincere thanks to Klickitat County's Department of Economic Development
for their support in publishing To The Point*

July 2nd

First Saturday Breakfast

**Lyle Lions
Community Center
7-10 am**

\$6 for adults; \$3 for 12 and under



**Ham & Eggs or
Made-to-order Omelets
All the Pancakes You Can Eat
Blueberry Compote
Orange Juice & Coffee**

*Proceeds go to fund eyeglasses, hearing
aids, scholarships and humanitarian
projects.*

What's Happening in Lyle

Marcia Buser

To receive a weekly email or to inform others about events and issues in our community, please send an email to LyleCommunity@gmail.com

Your email address, it will NOT be shared with anyone else or be used other than to inform you about events or issues in our community. You may request to be removed from the list at any time.



*"Life may not be the party we
hoped for, but while we're
here we should dance."*

Unknown