

# Newsletter

Published by Gorge Heritage Museum

Volume 2

Issue 1

Jan/Feb/Mar 2008



The Open Season for the Museum is from Memorial Day weekend (May) to September 30. The Museum hours are from 11:00 AM to 4:30 PM. Tours may be scheduled during the off-season by calling 509-493-3228 and requesting a visit.

This is our first issue of a continuation on a newsletter that was published a few years ago. We hope to keep everyone up to date on the Museum's activities and to, hopefully, arouse more interest in the community regarding the importance of sharing, collecting and saving the history of our local area for future generations.

## *Ruralite Scanning Project* by Jeff Elmer

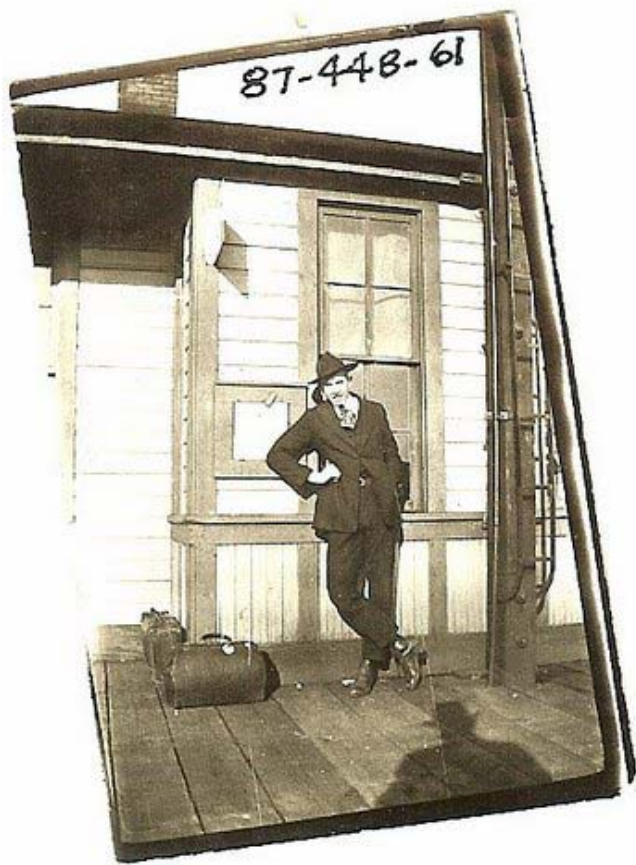
*The Ruralite Magazine began in 1954 to serve as a communication with customers of small, rural co-operatives in the northwest that were too small to support their own publications. It showed ways they could use electricity, and informed them about some of the issues facing public utilities. The publication's basic format has changed little over the years. Every issue contains the same general infor-*

*mation regarding electrical use, safety concerns, rate issues, conservation, and about new technology as it emerges. Each PUD could then include articles which were more specific for the particular area.. These included editorials, and featured stories of a local person, event, community or business.*

*I have been scanning articles from The Ruralite which relate to Klickitat County history. Our project begins in 1962. Images of these pages will be placed in the Museum's database, and copies will be available for a Museum visitor's use. Of the issues since 1962 (approx. 550 issues) 49 still remain at large. Many have been located, at either the PUD Office in Goldendale, or at the Ruralite's offices in Forest Grove, OR. However these articles are in bound-books which makes scanning them impossible. We are hoping that local families might have these missing issues, and would allow us to scan from them. Please contact the Museum if you can help. Pre-1962 issues containing articles with local focus are known to exist. However copies have not been located anywhere.*

*Ruralites that we are still seeking are -*

1962 - Jan. Feb. Apr. May June  
1963 - Jan. Mar. Apr. May June July Aug. Oct.  
1964 - Feb. June July  
1968 - July Aug. Oct.  
1971 - Mar. May  
1972 - Nov.  
1973 - May July Aug. Sept.  
1985 - July Oct.  
1986 - Feb.  
1990 - Nov. Dec.  
1994 - Sept. Oct. Nov.  
1995 - April May July Aug.  
1996 - Jan. Feb. June July Oct.  
1997 - Feb.  
2000 - April  
2001 - June Oct. Dec.  
2002 - Feb.



**Wilhelm Nikolaus Suksdorf** was born in rural Germany near Kiel in 1850. He emigrated to Iowa (USA) with his family at the age of eight. In 1876 he was enrolled in a science/agriculture course at the University of California. Before graduating, he left school to join his father and several brothers at White Salmon, Washington (Bingen) where he entered into various farming and town promotion activities.

He started making botanical observations of an informal sort in Iowa, continued in California, and began serious surveying and collecting of Washington plants during the summer of 1875. Since much of Washington vegetation could not be identified with existing manuals, in 1878 Suksdorf began corresponding with Asa Gray at Harvard University, in an effort to have his collection identified and named.

He received the degree of Master of Science in Botany from the Washington State College where his extensive research records are now stored.

Wilhelm Suksdorf was recognized by the

Historical Sources: Keith McCoy's Mt. Adams Country-Forgotten Corner of the Columbia Gorge and the Washington State Archives.



world of botany as a botanical authority. He had more than 100 plants named for him by other botanists. He spent weeks on the slopes of Mt. Adams where he catalogued more than 400 alpine plants.

*Wilhelm Suksdorf's historical home, in Bingen, is presently on the realty market. The West Klickitat County Historical Society has been working toward the goal of obtaining the home and moving it onto the Gorge Heritage Museum site which is owned and supported by the City of Bingen.*

This nearly 100 year old home, an important part of west Klickitat County history that needs to be preserved, would add some much needed space for the *Gorge Heritage Museum's local-history-exhibits*. (in response to the question—"Why would we move it from it's present site?")

*The West Klickitat County Historical Society welcomes all pledges from those who wish to support the effort to purchase and move the Wilhelm Suksdorf home onto the Museum site.*

***Please send pledges to:***

*West Klickitat County Historical Society  
Gorge Heritage Museum  
P.O. Box 394  
Bingen, WA 98605*

## *Bin-Jin or Bin-Jun or Bing- Un???*

I imagine that most of you read the article in the Sunset Magazine, introducing our little hamlet to the world. Since I am a stickler on pronunciations, I noticed that the pronunciation is Bin-jin. I guess it depends on who is pronouncing it. I always pronounce it Bin-jun or Bin-jen. However, as we all know, the town was named by the Suksdorf Family as it reminded them of Bingen on the Rhine in Germany. This original pronunciation was Bing-un as it is pronounced in Germany. A couple of years ago, Ruth and I interviewed one of the Suksdorf decedents, Loleta Suksdorf Zumwalt, who lived here through her High School years and into her early married life. She still pronounced the name Bing-un as per her family. I suppose we may never go back to the original pronunciation, and will continue to place the accent wherever we are comfortable. However, in my opinion, it would be proper (historically speaking) to mention the original pronunciation when relating the name to an interested party. Gm

### **WEBSITES OF INTEREST**

Washington Museums Association  
<http://www.washingtonstatemuseums.org>

Washington State Historical Society  
<http://www.wshs.org>

Gifford Pinchot National Forest – Heritage  
<http://www.fs.fed.us/gpnf/heritage>

Klickitat County Genealogy History  
<http://homepages.rootsweb.com/~westklic>

Museums of the Region  
<http://www.tcfm.org/tctour/museums>

WorldGen Web Project  
<http://www.worldgenweb.org>

More links on the Gorge Heritage Museum website  
<http://community.gorge.net/ghmuseum>

*We always welcome new members. If you find someone who is interested in joining, Membership Forms can be obtained at the Museum.*

### **West Klickitat County Historical Society Members**

<i>Jerry &amp; Lois Baker</i>	<i>White Salmon</i>
<i>Henry &amp; Linnie Balsiger</i>	<i>White Salmon</i>
<i>Roy &amp; Betty Barnes</i>	<i>Bingen</i>
<i>Ken &amp; Cynthia Barstow</i>	<i>Underwood</i>
<i>Jym &amp; Ann Batey</i>	<i>El Dorado, CA.</i>
<i>Judy Beckman</i>	<i>White Salmon</i>
<i>Betty Berry</i>	<i>Bingen</i>
<i>Kimberly Berry</i>	<i>Kent</i>
<i>Wayne Carlock</i>	<i>White Salmon</i>
<i>Doug Charters</i>	<i>Bingen</i>
<i>Roberta Childs</i>	<i>White Salmon</i>
<i>Abigail Corson</i>	<i>Bingen</i>
<i>Jeannette Cramer</i>	<i>Appleton</i>
<i>Robert Dickey</i>	<i>Bingen</i>
<i>Jeffrey Elmer</i>	<i>Portland, OR.</i>
<i>Kenny Gardner</i>	<i>White Salmon</i>
<i>James Griggs</i>	<i>Kent</i>
<i>Jim &amp; Judy Farrell</i>	<i>White Salmon</i>
<i>Herb &amp; JoAnn Hardin</i>	<i>White Salmon</i>
<i>Charles &amp; Della Henderson</i>	<i>White Salmon</i>
<i>Dorothy Henkle</i>	<i>White Salmon</i>
<i>Etta Hepner</i>	<i>White Salmon</i>
<i>Tim Hearn</i>	<i>Bingen</i>
<i>Klickitat County Historical Society - Goldendale</i>	<i>Goldendale</i>
<i>Gayle Krenz</i>	<i>White Salmon</i>
<i>Gail Logan</i>	<i>White Salmon</i>
<i>Mildred Lykens</i>	<i>Lyle</i>
<i>Bill Manly</i>	<i>White Salmon</i>
<i>Bob &amp; Mary Marquez</i>	<i>Sunnyside</i>
<i>Mike &amp; Priscilla McMillen</i>	<i>White Salmon</i>
<i>Carl McNew</i>	<i>White Salmon</i>
<i>Geneva Meyers</i>	<i>White Salmon</i>
<i>John &amp; Jan Nelson</i>	<i>Trout Lake</i>
<i>James Patrick</i>	<i>White Salmon</i>
<i>James Reckers</i>	<i>Seattle</i>
<i>Donald &amp; Carol Schaack</i>	<i>White Salmon</i>
<i>Elizabeth Schmid</i>	<i>Trout Lake</i>
<i>Barbara Sexton</i>	<i>Lyle</i>
<i>Mary Stevenson</i>	<i>White Salmon</i>
<i>Wallace &amp; Priscilla Stevenson</i>	<i>White Salmon</i>
<i>Rees &amp; Eloise Stevenson</i>	<i>White Salmon</i>
<i>Sean &amp; Kathryn Tackley</i>	<i>White Salmon</i>
<i>Terry Trantow</i>	<i>Bingen</i>
<i>Bob &amp; Sherry Van Alstine</i>	<i>White Salmon</i>
<i>Margaret Walker</i>	<i>White Salmon</i>
<i>Erin Walsborn</i>	<i>Trout Lake</i>
<i>Anne Ward</i>	<i>Husum</i>
<i>Laurence Weatherly</i>	<i>Bellevue</i>
<i>Jim &amp; Helen Webb</i>	<i>White Salmon</i>
<i>Bill Werst</i>	<i>White Salmon</i>
<i>Ken &amp; Kathy Wilkes</i>	<i>Kalama</i>
<i>Marilyn Winebarger</i>	<i>White Salmon</i>
<i>Ruth Winner</i>	<i>White Salmon</i>

*(Member; If I have made a mistake on the spelling of your name or on your address, I apologize—  
Please let me know. ....P.O. Box 2065, White Salmon/ neve@gorge.net—Thanks, gm)*



*100 Years of Railroad Service  
by Jeffrey Elmer*

The railroad's arrival 100 years ago has been chosen as the 2008 featured display for the Museum.

Ideas for the display include a map of the rail construction, and photographs of railroad crews. Other items might include schedules, tickets, pamphlets or brochures and clothing

(gloves, hats, gear) worn by the railroad workers. Stories by, or about, railroad workers are hoped to be included.

The display case will be used for some items, other items will be on the wall. Books of recommended reading about railroad history can be placed in the display case as well. We are hoping the projector can be used for a slide show of photographs from the Museum's collection.

Photographs or models of the various train engines, cars, or cabooses that were used through the years would be helpful.

The impact of the railroad to this area is another item of interest—how its arrival affected the fruit industry, tourism, the lumber industry, and the riverboat business.

If you have an item to loan for this display, or can provide any assistance in locating information, please contact the Museum.  
Thank You.

*It's that time of year again, to pay your  
membership dues  
Thank you for your past membership and contributions  
to the Gorge Heritage Museum  
And your help in keeping Our local Heritage alive.*

*Hope to see you at the next meeting on  
Wednesday, January 23, 2008 at 7:00 PM  
in the lower level of the Museum.*

## Society Remodels Historic Building, *by Ruth Winner, Chair*

*After* years of discussion the lower level of the museum building has received a face-lift when Phase I was basically carried out in about three months in early 2004. The project was then put on hold until Phase II could be accomplished.



Re-position sewer line for ADA toilet

Phase II, the north wall foundation was accomplished after the Klickitat County Commissioners and committee members for the Economic Development Funds were awarded to the owners of the property, the City of Bingen. The representatives that presented the request to the EDA committee were Mayor Brian Prigel and Ruth Winner, building chair for the Society, on a very rainy night in January of 2006. Phase II was under the direction of the City Council and was final in October of '06. It was time then for the install of the new gas heater. Next the north wall's interior could be addressed. The next item was the horribly damaged flooring in what was the kitchen area. This replacement was accomplished during December of '06. The finishing touches were almost accomplished by the third anniversary date of February 7, 2007. Another troublesome wall to cover over the sink was scheduled for the student mural to arrive. The lower level is so attractive that members wished to begin using even before completion.

The exterior painting was scheduled, under the direction of then President, Etta Hepner, who engaged the Northwest Service Academy volunteers to do the job. With the acquired usually helpful SDS Lumber Co with their man lift, under the direction of Doug Charters, the painting was accomplished in the spring of 2007.

The membership chairperson, Judy Farrell, was instrumental in arranging rubbish pick up and has been most helpful with the maintenance cleaning of the remodeled meeting, office and toilet areas.

Additionally, thanks are extended to Jerry Baker for his excellent carpentry skills, and thanks to Abby Corson for her loving care of the garden area.

Phase III, Americans with Disabilities Act, (ADA) needs to be addressed and review the previous plans with the on going possibility of adding the Wilhelm Suksdorf house to the property and considering that accessibility for the public. A joint committee has been organized with two members of the council and two members of the trustees to over see that project. Ideas under consideration for the ADA access will be proper entry doors, ramps and main gallery toilet room.

Donations will be necessary for this extensive project. Donations are always thankfully welcome and appreciated.

Then everyone will be able to access this updated, historic facility.



During the remodel phase it was the pleasure of the Society to engage students of the Henkle Middle School '05 and '06 for their donation of the beautiful murals that enhance the museum building.

# Gorge Heritage Museum

**Museum memberships are  
available as follows:**

**Print and mail this form with a check to:**

West Klickitat Historical Society  
Gorge Heritage Museum  
PO Box 394  
Bingen, WA 98605

Individual.....\$20  
Family.....\$35  
Supporting.....\$100  
Life Member.....\$1000

Name: \_\_\_\_\_

Address: \_\_\_\_\_

City: \_\_\_\_\_ State: \_\_\_\_\_ Zip: \_\_\_\_\_

Email Address: \_\_\_\_\_

Membership \$ \_\_\_\_\_

Gift/Donation \$ \_\_\_\_\_

Total \$ \_\_\_\_\_

**West Klickitat County Historical Society  
Gorge Heritage Museum  
P.O. Box 394, 202 East Humboldt St.  
Bingen, WA 98605**